

Stella Doradus

Titan iRepeater

Brochure and User Guide for iR6
and iR4 Repeaters

Stay
Connected.

Amplify
Your Signal.

TITAN – BROCHURE & USER GUIDE

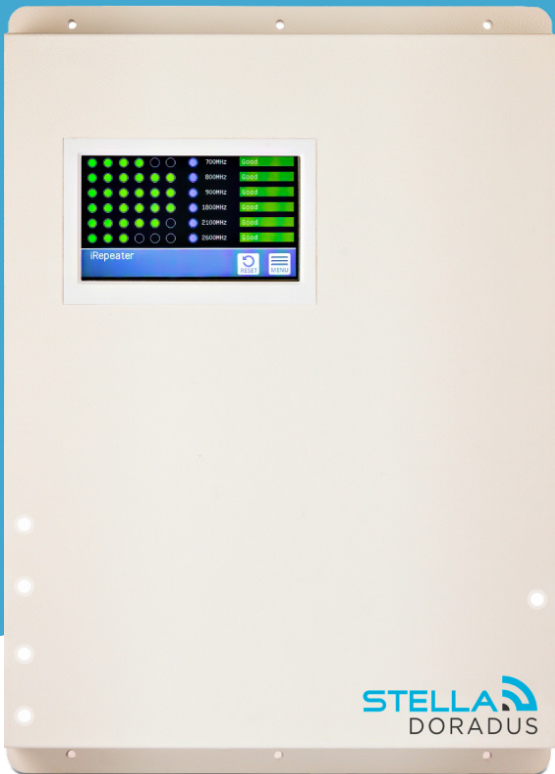
Product Overview

Features & Specs	04
Titan Kit	06
Modular System	07
PortSense	08
Network Scanning	09

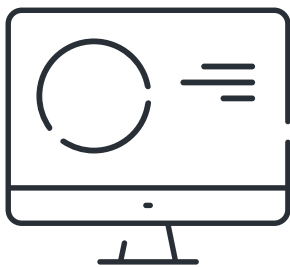
Other

Stella Control	10
FAQs	11

The Titan iRepeater

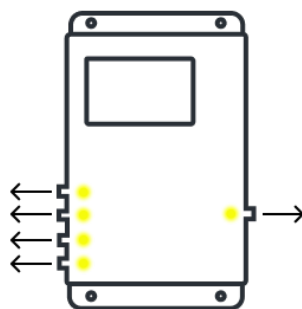


MODEL	WEIGHT	DIMS CM	SKU	BANDS
Titan iR6	4KG	43x30x4.8	iR6-T	28/20/8/3/1/7
Titan iR4	2.8KG	30x30x3.6	iR4-T	28/20/8/3



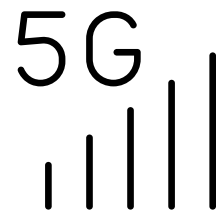
REMOTE MONITORING

Monitor signal repeaters performance, troubleshoot, issues and adjust setting to ensure optimal coverage and reliability with StellaControl.



PORTSENSE

Our PortSense Technology provides immediate feedback on repeater connectivity by continuously monitoring the status of network connections.



AMPLIFY SIGNAL

Amplify mobile network coverage, improving signal strength across cellular technologies, including 5G, 4G, 3G and 2G.

Specifications

EU Bands	B28	B20	B8	B3	B1	B7
Downlink	758-788	791-821	925-960	1805-1880	2110-2170	2620-2690
Uplink	703-733	832-862	880-915	1710-1785	1920-1980	2500-2570

Amplifier Specification

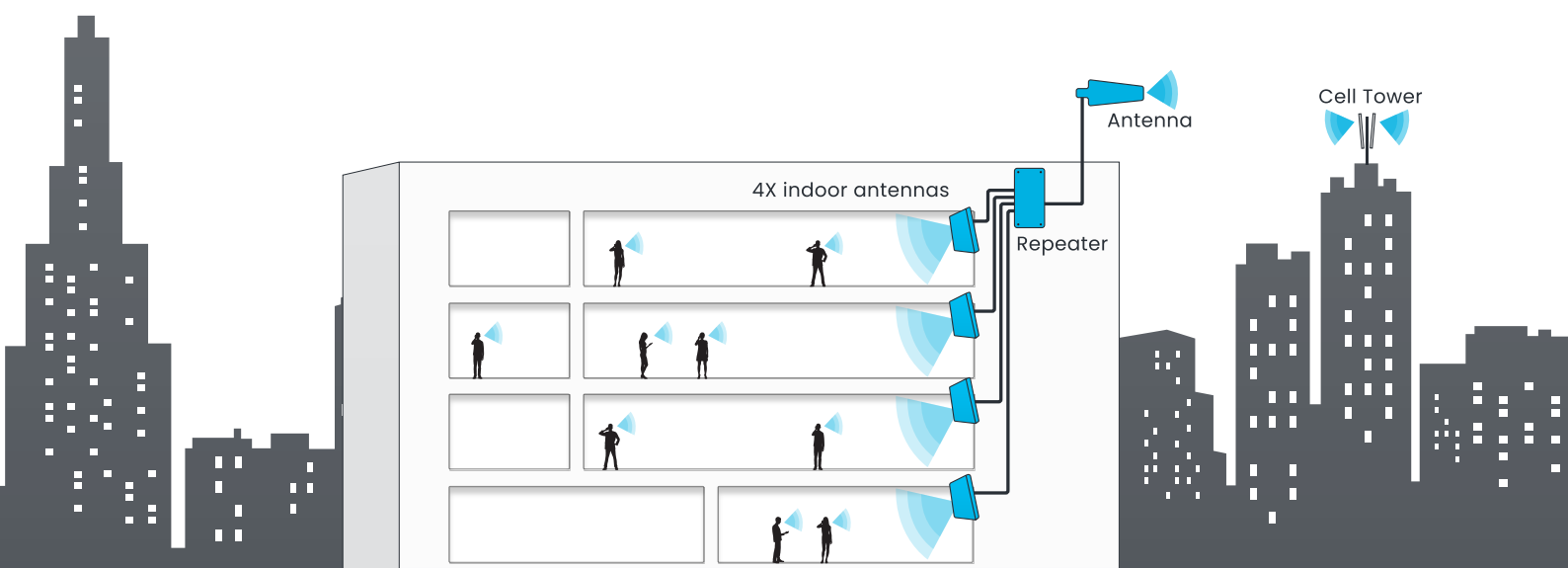
Coverage	up to 15 rooms with one Titan. (200+ rooms when LineAmps are deployed)
Gain	Uplink Gp: 65dB Downlink Gp> 65dB
Pass band ripple	<4dB
I/O impedance	50 ohm/SMA female connector
Max up/down signal strength	20dBm / 10dBm
Ambient Temperature	-30°C to +70°C
Power supply input	110 - 240V AC
Power supply output	12v DC
Oscillation Control	Automatic
AGC Level Control:	Automatic ¹
Uplink Switch On	Yes ²
AGC Range	0 to 30dB
Surge protection	SMA connectors DC grounded, 12V DC port MOV protected
Port Sense	Yes
Embedded modem	Yes

Antennas	Indoor Panel	Outdoor Yagi
Nominal Gain	6.4dBi / 9.4dBi	10dBi
3dB beam Pattern	60° x 60°	60° x 50°
Bandwidth	700MHz - 2700MHz	700MHz - 2700MHz
VSWR	<1.4	<1.5
Front to Back Ratio	> 20dB	> 20dB
Polarization	Vertical	Vertical
Power Rating	50W	50W
Impedance	50-OHM	50-OHM
Termination	N-Female	N-Female
Cross Pol. Discrimination	-20dB	-20dB
Dimensions	210 x 180 x 43mm	442 x 205 x 62mm
Weight	0.68kg	1.2kg
Wind velocity	126km/hr	140km/hr
Working temperature	-40°C to +65°C	-40°C to +65°C

How it Works

The Titan iRepeater is a commercial grade cellular amplifier that amplifies the signal for all mobile operators. When connected to the StellaControl platform, the Titan can be remotely managed, monitored, and adjusted, as well as receive real-time measurements of signal power, signal gain, and other control metrics for each band.

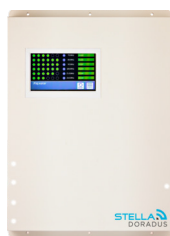
The 4 antenna ports allow the cellular signal to be amplified in 4 separate areas within the building. This increases the coverage area to between 5 and 15 rooms, depending on the size and shape of the room. The Titan iRepeater is part of a modular system which, by adding Line Amplifiers, can provide coverage in large, multi-storey, multi-zoned buildings.



4X Internal antennas



Internal cables
4x15m SD240



Titan
iRepeater

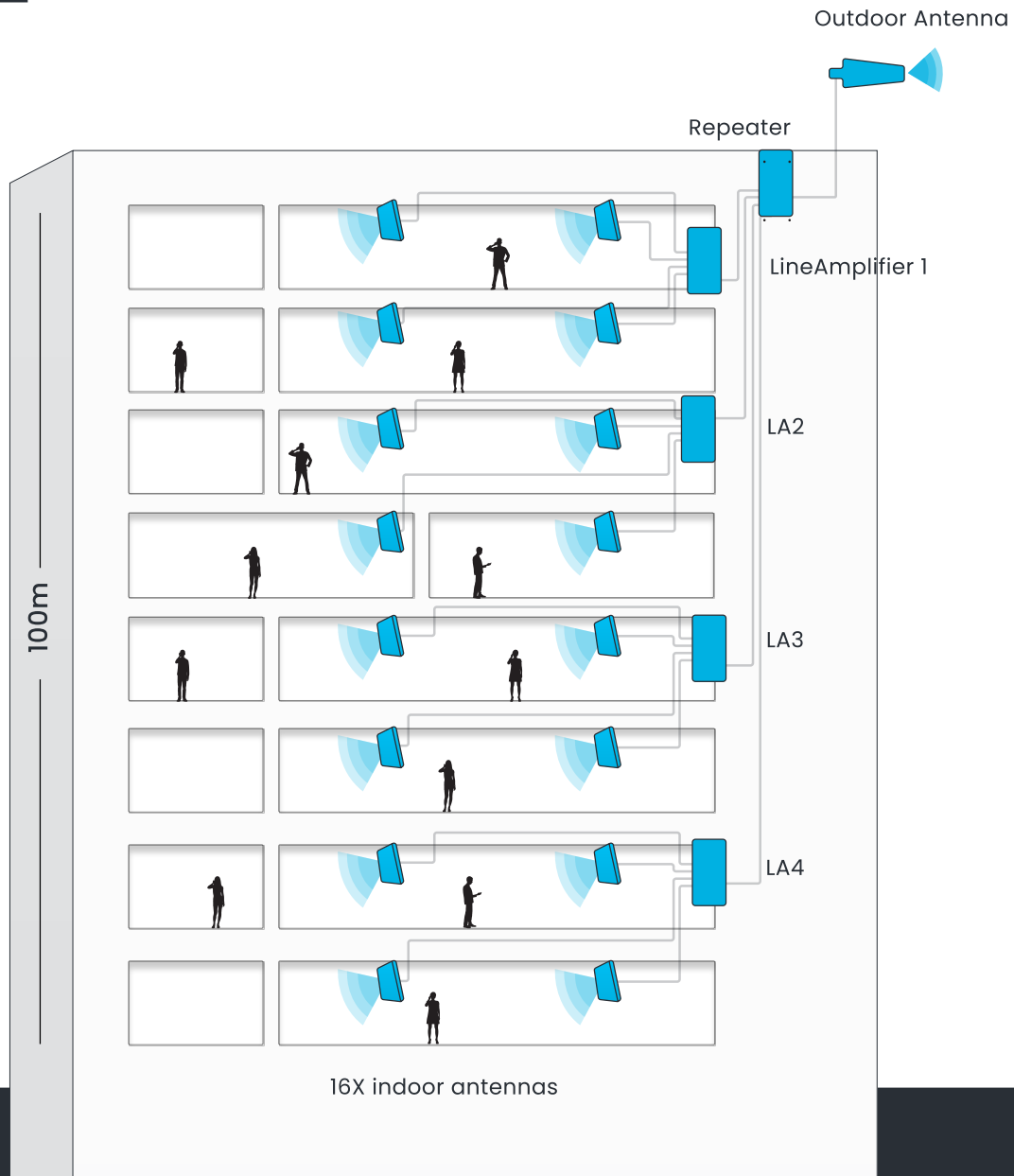


External 15m
cable SD400



External
Antenna

Modular System

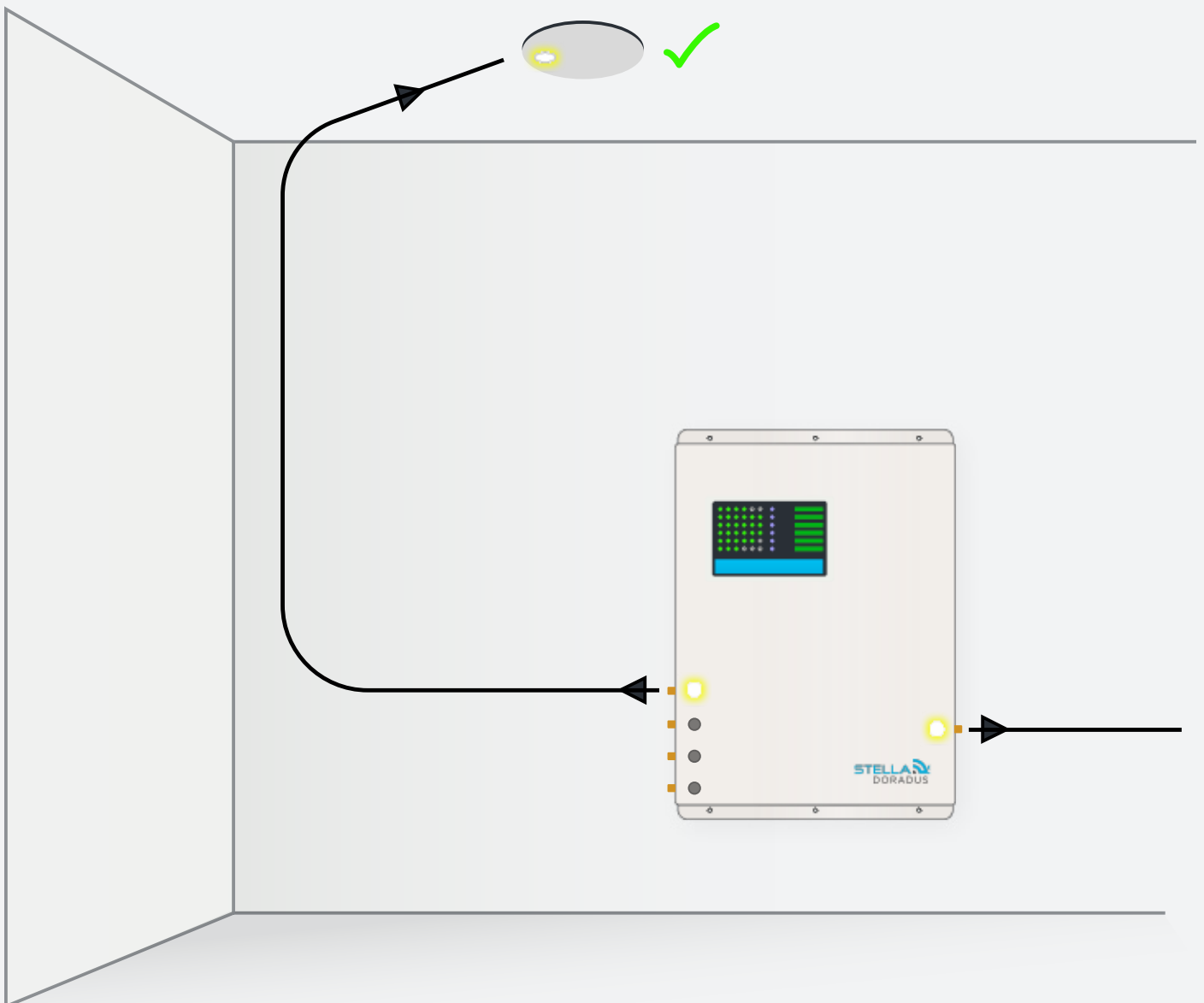


Plug and Play for a System of Any Size

The 4 antenna ports allow the cellular signal to be amplified in 4 separate areas within the building. This increases the coverage area to between 5 and 15 rooms, depending on the size and shape of the room.

The Titan iRepeater is part of a modular system which, by adding Line Amplifiers, can provide coverage in large, multi-storey, multi-zoned buildings.

PortSense



OUR PORT SENSE TECHNOLOGY

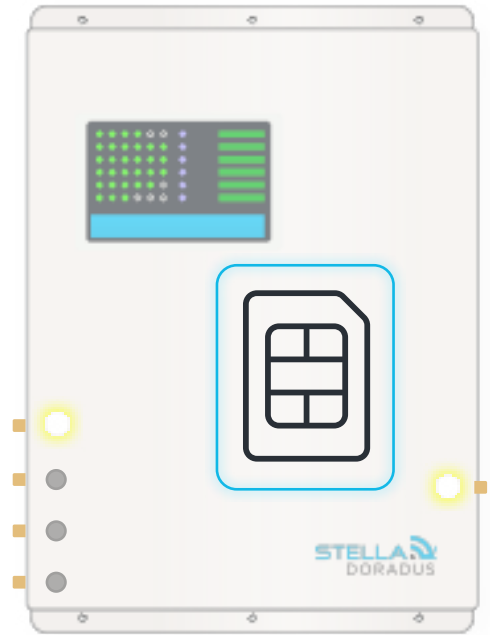
In order to test the cable connections between the repeater and the antennas, there are 5 LEDs on the repeater and corresponding LEDs on the indoor antennas.

These LEDs light up when the antennas are correctly connected to the repeater. This assures the installer that the antennas are outputting signal and there are no faults in the cables. They can also be used to show which antenna is connected to which port on the repeater.

Network Scanning

EMBEDDED CELLULAR MODEM

The Titan iRepeater has an internal embedded cellular modem that automatically connects to StellaControl (our online monitoring platform), without the need to connect an ethernet cable. This means the repeater is always accessible remotely for monitoring.

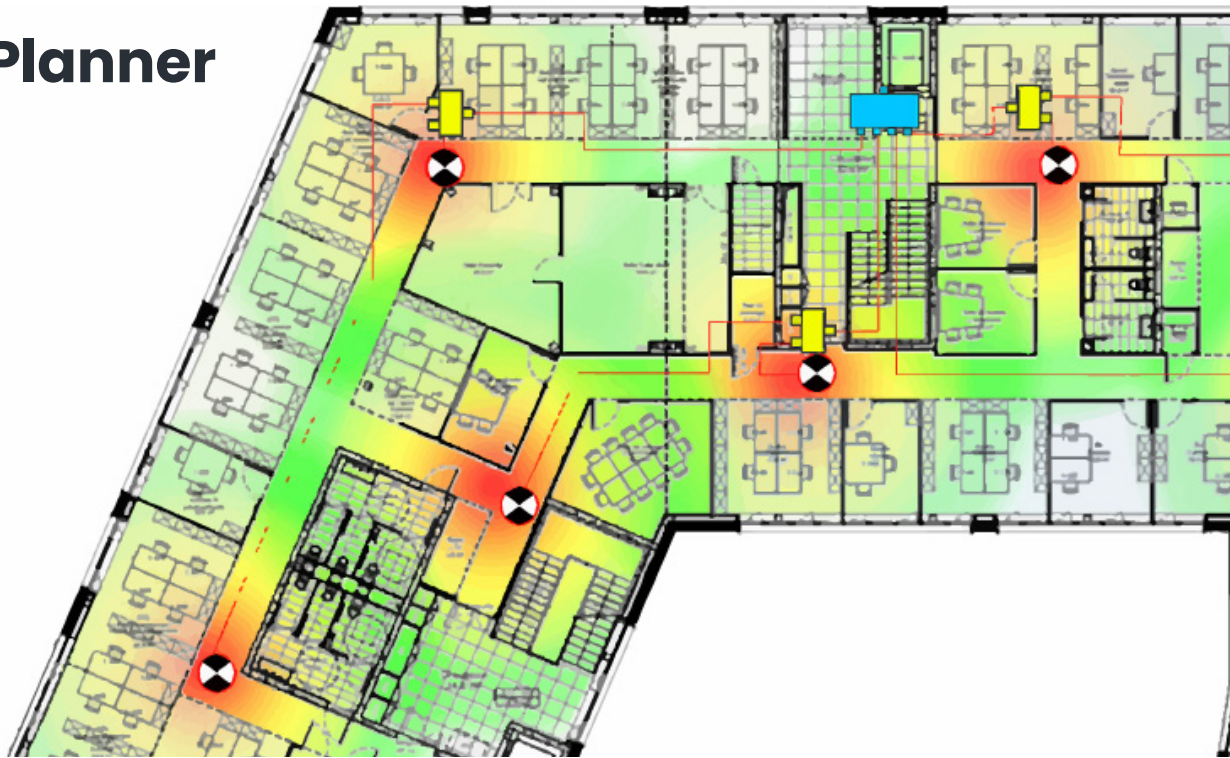


NETWORK SCANNING

The mobile signal of all operators can be scanned outside the building. A time chart of cellular coverage can be built up for the building. This is very useful for troubleshooting and monitoring the ever-changing RF environment.

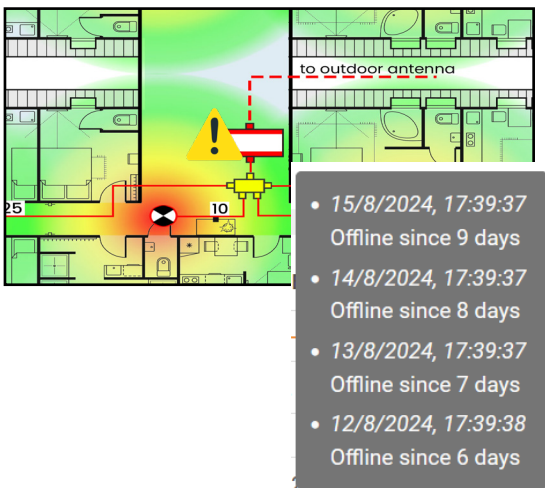
Operator	Service	Band	Cell ID	Power	Quality	RSSI	PCI
02 DE	LTE	B7	5461519	■ -106	■ -6	-84	151
	LTE	B3	5732137	■ -89	■ -14	-55	437
	LTE	B8	5732127	■ -78	■ -8	-55	58
	LTE	B20	5732117	■ -65	■ -20	-29	163
Telekom	LTE	B7	33016582	■ -87	■ -6	-62	408
	LTE	B1	26902798	■ -90	■ -20	-52	446
	LTE	B3	33016576	■ -78	■ -7	-38	279
	LTE	B3	26902789	■ -86	■ -11	-58	445
	LTE	B8	33016585	■ -62	■ -7	-38	305
	LTE	B20	28483077	■ -75	■ -20	-38	208
Vodafone DE	LTE	B7	3504646	■ -107	■ -6	-81	147
	LTE	B1	3504660	■ -96	■ -18	-60	85
	LTE	B1	2580245	■ -102	■ -20	-62	436
	LTE	B3	2827016	■ -100	■ -20	-60	69
	LTE	B3	3504649	■ -95	■ -8	-61	144

Stella Planner



STELLA PLANNER

Repeater systems can be designed with the StellaPlanner. Building plans can be uploaded and antennas placed in the desired locations. The tool calculates signal power and RF losses in the design. All projects can be stored in a personalized account on StellaControl. Stella helps you to design the optimal repeater system.



ALERTS

Email alerts are automatically sent to the installer if there are any changes to the system, eg. an amplifier is disconnected, or the operator installs a new base station antenna in the vicinity. This forewarns the installer/Stella of potential issues and to take corrective action.

FAQs

What is Stella Control?

The [StellaControl RMS](#) is a web-based platform that provides installers and authorized users remote monitoring, managing, and control of repeater installations.

What is the benefit of the Titan

The Titan repeater has increased gain, up to 65dB. It also has an embedded cellular modem which auto connects to StellaControl RMS on startup, for remote monitoring. Remote scans can also be conducted, which allow you to study and understand the signal outside the building.

Are Stella Doradus repeaters fully compliant with EU/UK regulations

Yes. Our broadband repeaters are fully legal across the EU, UK and Ireland. They pass all the required European Radio Equipment Directives, (RED) and Ofcom/Comreg specifications.

Do you have a returns policy?

Yes, you can find our returns policy at www.stelladoradus.com/shipping-returns/

What is the Stella Planner

The [StellaPlanner](#) is our online repeater planning tool. It allows you to upload .PDF plans of your building, place antennas and repeaters where you see fit, and pre-design your installation in the most efficient way. You can then download the .PDF plans for your reports.

What is PortSense

[PortSense](#) (patent pending), is a new feature whereby all the cables, connectors and antennas in the system are automatically and continuously tested for any faults. If there are no faults, a white LED turns on inside the antenna and on the repeater itself. This gives the installer confidence that he/she has done everything correctly. PortSense can also be viewed remotely on StellaControl.

What frequency repeater do I need?

For homes and small offices, we recommend the SOHO-R4. This amplifies 4 cellular bands giving strong connectivity and redundancy. For larger buildings, we recommend the Titan range.

Is there an extended warranty?

Yes, we provide up to 7 years extended warranty. Contact us at www.stelladoradus.com/contact/ for more information



Stella Doradus

Coolfinn, Portlaw, Waterford, Ireland

P. +353 51 387145 info@stelladoradus.com
www.stelladoradus.com